



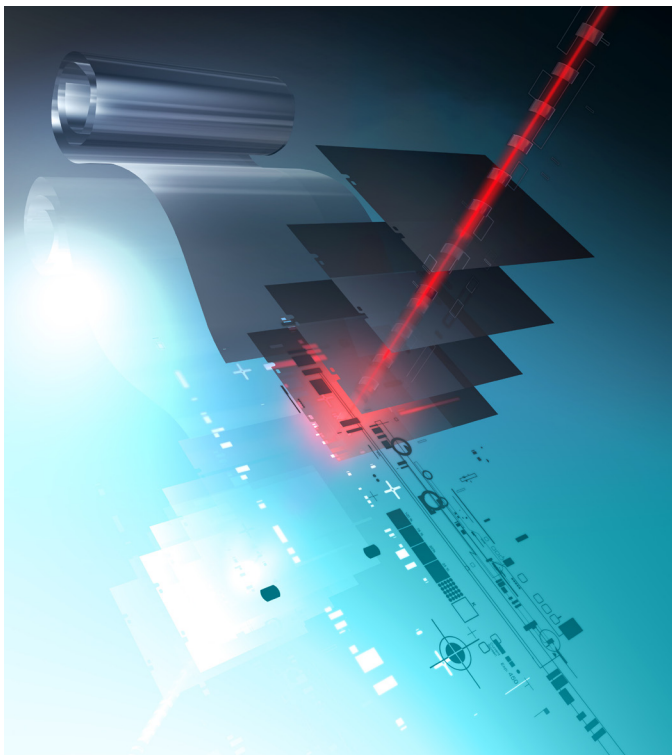
**SilverStream**  
SUPPLIES



## **SILVERSTREAM® DIGITAL POLYESTER PLATE MATERIAL**

### **SilverStream Digital Polyester Plates**

- For use in all major imagesetters and polyester platesetters
- Ideal for small and mid-sized printing
- For high quality, short run printing
- Roll finished material, daylight packaging, easy handling, low production cost
- Exceptional accuracy on press makes it suitable for 4-color applications



### **Most profitable CtP plate for high-quality printing**

SilverStream digital polyester plate material is designed for accurate high quality short-run printing. SilverStream plates can image 175 line screens, and can print up to 20,000 impressions — making it right for a wider range of jobs in the shorter-run marketplace.

### **High quality results**

SilverStream plates provide the exceptional accuracy and on-press performance that enable it to provide high-quality printing up to 175lpi. SilverStream plates have a forgiving ink-water balance, fast roll-up, minimal fountain additives and work with virtually any ink.

### **Wide Operating Latitude**

An advanced formulation means wide exposure latitude over an unsurpassed screen dot range. That means rich solids and delicate highlights with less frequent calibration. Its exposure speed is closely matched to film for fast switching between film and plate. An advanced coating makes the plates scratch-resistant, and crisp image contrast means fast checking.

### **Excellent press performance for 2 and 4 up size**

The thickness and backing of the plate has a direct impact on the registration accuracy on press. An optimized backing is provided on both thickness plates. The thick (8 mil) version has an exceptionally thick base for optimal press performance and registration. Its advanced coating requires a minimum amount of fountain solution additive and enables the plate to perform well in an all polyester or mixed metal and polyester environment being run on the same press.

### Exceptional durability

The newly engineered surface coating gives SilverStream plates lithographic characteristics similar to those of a metal plate. With exceptional ink/water balance, SilverStream offers excellent water receptivity and ink adherence. For easy, trouble-free use, its surface is stable and scratch resistant.

### Easy operations

SilverStream roll finished material, supplied in daylight packaging, can be imaged in any any imagesetter or polyester platesetter using a red laser. SilverStream plates can be processed in almost any Rapid Access processor. With SilverStream, no additional hardware investment is needed.

Feature	SilverStream Digital Polyester Plate Material
Plate type	<ul style="list-style-type: none"> <li>Positive-working offset plate on a dimensionally stable polyester base for exposure in HeNe laser or red laser diode imagesetters or polyester platesetters</li> <li>Spectral sensitivity between 630 and 670nm</li> </ul>
Gauges	<ul style="list-style-type: none"> <li>Thin (0.13mm/5mil) or Thick (0.20mm/8 mil) setting on press</li> </ul>
Assortment	<ul style="list-style-type: none"> <li>Roll finished material in a variety of widths and core sizes to fit on all imagers and presses</li> <li>Daylight system</li> <li>Specs: 600BD, 610BD, 610CDH, 610CD, UCT153, 820, 725 and 1520</li> </ul>
Processing Steps	<ul style="list-style-type: none"> <li>2 bath system: SilverStream Activator &amp; SilverStream Stabilizer</li> </ul>
Process conditions	<ul style="list-style-type: none"> <li>20 second development time</li> <li>SilverStream Activator: 30°C +/- 2°C</li> <li>SilverStream Stabilizer: room temperature</li> <li>Replenishment rate: 120ml/m<sup>2</sup> for SilverStream Activator and SilverStream Stabilizer</li> <li>Bath life is 2 to 4 weeks depending on volume</li> </ul>
Press chemicals	<ul style="list-style-type: none"> <li>Fountain: SilverStream Universal or G648c</li> <li>Anti-tone additive: G641AD</li> <li>Corrections: Deletion pen &amp; Addition pen</li> <li>Plate cleaner: Antura CtP plate cleaner</li> </ul>
Store conditions	<ul style="list-style-type: none"> <li>Prior to processing: 24 months after manufacturing date, store below 20°C</li> <li>After processing: 2 weeks under the condition plates are protected from light</li> </ul>
Run Length	<ul style="list-style-type: none"> <li>20,000 prints</li> </ul>
Resolution on press	<ul style="list-style-type: none"> <li>5% - 95% at 175lpi</li> </ul>

SilverStream is a registered trademark of Printware LLC.

CORPORATE HEADQUARTERS:  
 PRINTWARE, LLC  
 2935 WATERS ROAD  
 SUITE 160  
 ST. PAUL MN 55121-1523  
 MAIN: 651-456-1400  
 INFO@PRINTWARELLC.COM  
 WWW.PRINTWARELLC.COM